



PRIDE  
*in Our Past*



*Building* Our  
**FUTURE**

REGINA CATHOLIC EDUCATION CENTER



## A MESSAGE FROM REGINA'S LEADERSHIP



Dear Friends and Family of Regina,

It's a great time to be a part of the Regina Catholic Education Center family. Our mission is direct: we provide a faith-based education to those who desire rigorous academics, spiritual development and a service-above-self experience. While Regina's academic and extra-curricular programs are strong, our 60-year-old campus greatly needs facility improvements and updates. You'll learn more about the progress we've made to date through this capital campaign booklet and about the projects that are next in line for completion. You'll also learn about how – thanks to the generosity of three donors – we are well on our way to funding the remaining projects.

*We have more work to do at Regina and  
we are asking our extended school family for support.*



### OUR MISSION

The Regina Catholic Education Center is committed to preparing tomorrow's leaders through a comprehensive educational experience focused on excellence and anchored in the teachings of the Roman Catholic Church.

This is our request: please review this campaign booklet and prayerfully consider supporting the continuation of our *Pride in Our Past, Building Our Future* Capital Campaign with a new gift or by extending your original pledge. Your ongoing support of Regina will help us better enable our students to grow spiritually and academically, and learn the importance of community and service to others.

Sincerely,

Matt Pacha  
*Capital Campaign Co-Chair*

Jason Dumont  
*Capital Campaign Co-Chair,  
Regina Building and  
Grounds Committee Chair*

Melinda Shetler  
*Regina Board  
of Education Chair*





# REGINA CATHOLIC EDUCATION CENTER

2500 ROCHESTER AVENUE



## ***Pride in Our Past, Building Our Future Capital Campaign***

\$4.85 million raised  
during initial campaign

\$1.85 million already raised  
in campaign continuation

\$1.1 million remaining  
to raise

**Total Campaign Goal:  
\$7.8 million**

Launched in 2016, the *Pride in Our Past, Building Our Future* Capital Campaign has raised \$4.85 million and allowed Regina to address multiple needs throughout our campus. To date, we have:

- Expanded and resurfaced the front parking lot, resurfaced the front circle drive and replaced lighting in the front lot
- Replaced the leaking high school gymnasium roof
- Built the new First Avenue entrance drive, including extra rear parking spaces and a walkway from First Avenue
- Renovated the 60-year-old boys and girls locker rooms
- Replaced the antiquated bell and intercom system
- Rerouted storm water retention, which was required by the city

In addition, thanks to a generous donor, we were able to build and furnish the Regina Athletic Training Facility, which includes a weight training room, wrestling room, film and team meetings room, and coaches' offices. Although these were originally Phase 2 projects, Regina's Board leadership decided that it was in Regina's best interest to accept the donor's offer and move the training facility up on the schedule of targeted projects.

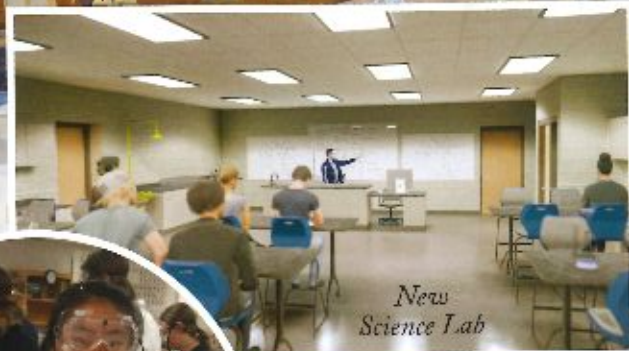
Now, with new gifts from three donors totaling \$1.85 million, we look to raise the final \$1.1 million needed to complete the remaining Phase 1 projects. Our sights are now set on raising a total of \$7.8 million in the *Pride in Our Past, Building Our Future* Capital Campaign.





Regina has a strong tradition of forming students academically, spiritually and socially. While people and programs are most important in a school, buildings do matter. The education infrastructure must promote the learning process, rather than inhibit it.

To continue our focus on the academic, spiritual and social needs of our students, Regina's Board leadership studied what renovations and improvements would position Regina for future growth. Part of the resulting plan was to build a new Education Wing and to modernize and expand our Early Childhood Center. These two projects are the top priorities of the campaign continuation.



New Science Lab



Features of the science lab will include:

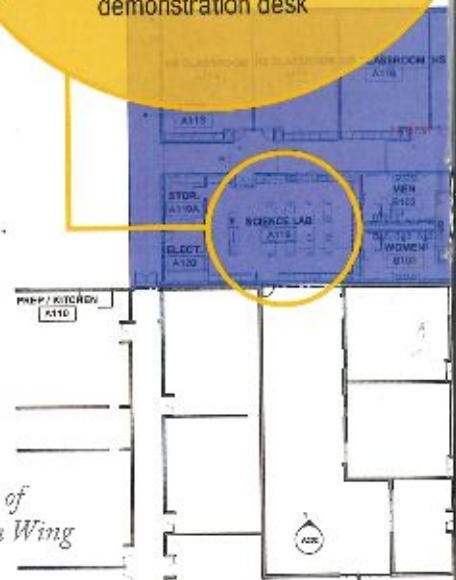
- A Smart Board with 3D projection and virtual reality capabilities
- Lab centers to accommodate six to eight students
- A teacher lab demonstration desk

## BUILD A NEW EDUCATION WING

**Estimated Cost: \$3,265,000**

The new Education Wing will feature 11,723 square feet of new construction built where the weight room and modular classrooms once stood. The one-story Education Wing will include four classrooms for junior and senior high classes. Other features will include a state-of-the-art science lab, lobby, concession area, athletic training room, restrooms, and an entrance for extra-curricular activities.

Floor Plan of New Education Wing







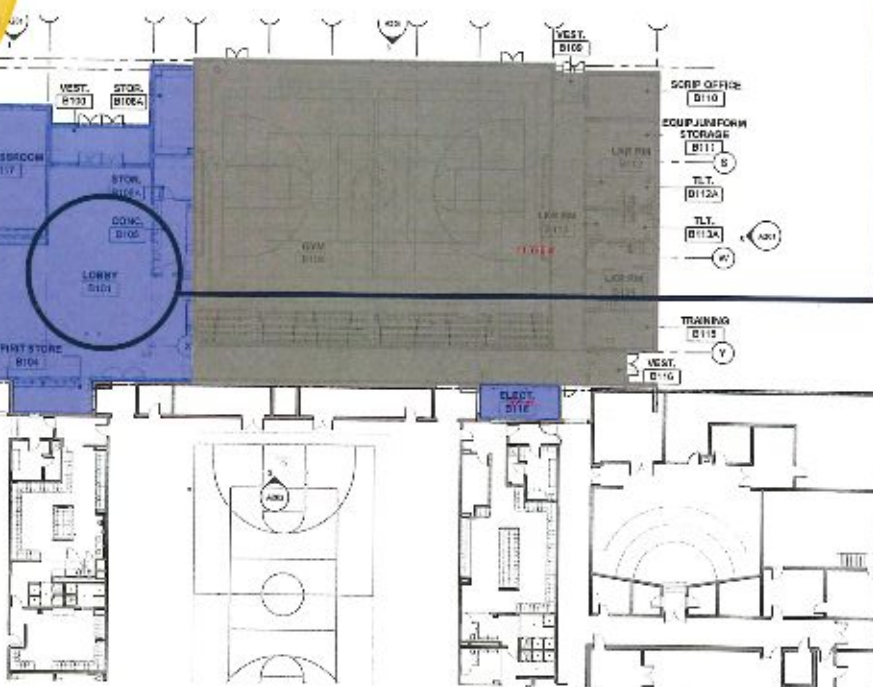
*Features of the new lobby will include:*

- Flex space – this area will be used as space for educational activities during the school day, and as an entry point for people attending extra-curricular activities such as athletic events in the evening
- A trophy case and donor wall

The lobby will be constructed so that it can connect to a new gym, if a new gym is built in the future.

The former wrestling room, which is currently used by the dance and golf teams and as a storage space, will remain in place adjacent to the new Education Wing.

Thanks to the generosity of the initial donors to the campaign continuation, construction on the Education Wing is scheduled to begin in September.



## RENOVATE AND EXPAND THE EARLY CHILDHOOD CENTER

### *Initial Allocation: \$500,000*

Regina's Board leadership is aware of the important role our Pre-K program plays in introducing families to Regina. It is an essential part of our students' initial experience at Regina, and a big reason families choose to stay at Regina for elementary school. Historically, a majority of our Pre-K students elect to enroll in Kindergarten at Regina. The success of this program is a priority for the leadership at Regina as well as a key to long-term enrollment growth and stability.

As part of this vision, we have allocated \$500,000 in capital campaign funds to improve the Pre-K facilities and create enough space for future expansion of the program. As the program grows, we want to have space available to grow with it. We would like to convert the existing 6th-grade wing into a new Pre-K center large enough to serve our current enrollment and leave additional room for growth. Preliminary discussions include secure entrance and exit points, updated classrooms with more space per child, additional bathrooms, teacher prep rooms, storage, an indoor play center, and a STEM room. The extent to which we can proceed with some or all of these Pre-K projects will depend on amount of funds raised. With your help we can make all of them come to fruition. The ultimate goal of this project is to better serve our current enrollment needs and to increase enrollment in the Pre-K program going forward.



## IMPROVE PARKING AND ROADWAYS

**Estimated Cost: \$400,000**

As part of the new Education Wing work, we must make improvements to the adjacent parking lot, lighting and landscaping. We will temporarily place rock in the former water retention area to accommodate parking during construction. With strong support for the campaign, we look to make additional improvements including replacing a portion of the driveway on the east side of the school and proceeding with permanent paving of the rocked parking area. These improvements have been part of our long-term plan, but must be delayed until the building projects are complete due to the expected heavy construction traffic.



## SUPPORT THE EXCELLENCE FUND

In addition to asking for support for the *Pride in Our Past, Building Our Future* Capital Campaign, we ask for support for Regina's *EXCELLENCE FUND*. The goal for the 2019-2020 year is \$450,000. Annual gifts to the *EXCELLENCE FUND* benefit teacher salaries, tuition assistance, technology, textbooks, professional development and operating expenses.

Please consider making a two-year pledge to the *EXCELLENCE FUND* concurrently with your pledge or gift to the capital campaign.



## WAYS TO GIVE

**Cash** | The most common method to donate to a capital campaign is by making a pledge, then making cash payments on that pledge using a check, credit card or automatic withdrawal. For those who extend their previous pledge, payments may continue as before. You may benefit from such payments with a charitable deduction on your tax return.

**Securities** | Stocks, bonds or mutual fund shares that have appreciated can have an immediate impact on our campaign and may also provide a tax-advantaged way to give.

**Corporate Matching Gifts** | A matching gift program provided through your employer or board membership may allow you to increase the value of your gift. Please consult with your employer's human resources director or community outreach director to see if your company has a matching gift program.

**Planned Gifts** | Planned giving is the process of carefully selecting the best method and asset for making a charitable gift. Such a gift can enable you to make full advantage of tax laws to accomplish your financial and charitable goals. Below are a few commonly used ways to make a planned gift:

- Bequest by will or living trust
- Charitable remainder trust, charitable gift annuity, or charitable lead trust
- Beneficiary benefits from IRAs, pensions or financial accounts

*Please be sure to contact your tax adviser about these options and what may be best for you and your family.*



## NAMING OPPORTUNITIES

Education Wing: \$1 million (*named*)

***The Gavin Family Education Wing***

Lobby: \$350,000 (*named*)

***The Gavin Family Atrium***

Science Lab: \$250,000 (*named*)

***Dumont Family Science Lab***

Early Childhood Center: \$250,000

First Avenue Drive: \$250,000

Classrooms in Education Wing: \$150,000 each  
(4 total, 2 *named*)

***Jack & Donna Muller***

***The Klitgaard Family***

Concession Stand: \$125,000

Spirit Store: \$100,000

## DONOR RECOGNITION

Regina Catholic Education Center will recognize total campaign pledges of \$3,000 or more on a new donor wall.

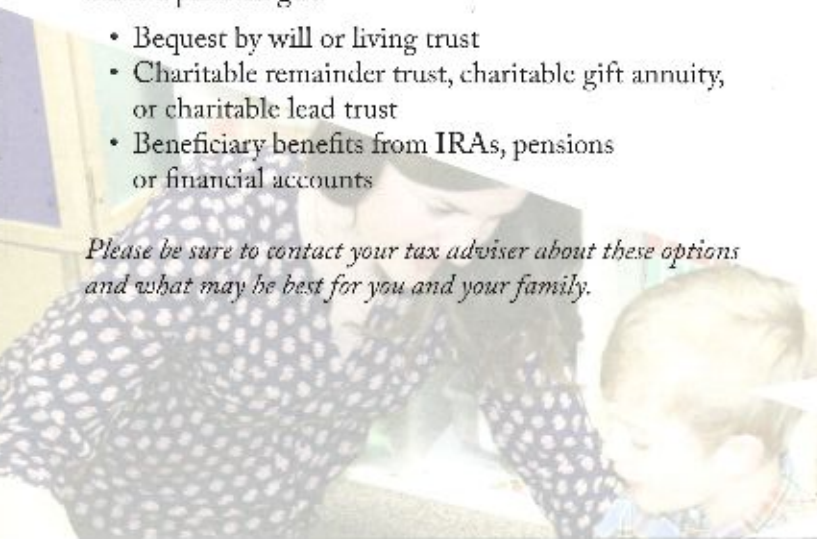
The following levels have been established to recognize those generous contributions:

***Bronze:*** \$3,000 — \$9,999

***Silver:*** \$10,000 — \$49,999

***Gold:*** \$50,000 — \$99,999

***Platinum:*** \$100,000 or greater





## CAMPAIGN LEADERSHIP

### *Honorary Chairs*

John and Charlotte Gavin  
Jack and Donna Muller

### *Campaign Cabinet*

Matt and Anne Adam  
Eric and Missy Aitchison  
Bill and Deb Brandt  
Jason and Suzanne Dumont  
Mike and Fran Jensen  
Jim and Anne Kelly  
Chris Klitgaard  
Erin and James Litton  
Greg and Sarah McLaughlin  
Jack and Donna Muller  
Matt and Elaine Pacha  
Roger and Barb Reilly  
Chris and Angela Villhauer  
Ed and Jen Wallace

### *Pastoral Council*

Rev. Chuck Adam  
Rev. Gary Beckman  
Very Rev. Rudolph Juarez  
Rev. Steve Witt

### *Foundation Staff*

Kecia Boysen, *Executive Director*  
Shelley Rublaitus, *Development Coordinator*  
Katherine Weiner, *Administrative Assistant*

### *Campaign Counsel*

Steier Group



**REGINA**  
**CATHOLIC**  
EDUCATION CENTER

2140 Rochester Avenue  
Iowa City, IA 52245

Regina Foundation Office • 319.354.5866

[www.regina.org/foundation](http://www.regina.org/foundation)  
[foundation@regina.org](mailto:foundation@regina.org)